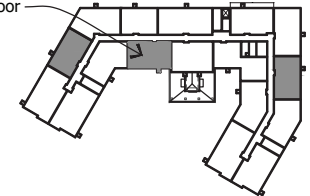


# VINTAGE COOPERATIVES

Designated as  
ASNI Type 'A' Unit  
on 1st Floor



2 Units on 2nd Floor  
3 Units on 1st and 3rd Floors  
8 Units Total

## ELM SUITE 1,275 SF

2 Bedroom, 2 Bath

Note: Vaulted ceilings in living/dining area in 3rd floor units

\*\* In continuous effort to improve our product, Vintage Cooperatives reserves the right to change, from time to time, specifications and dimensions. All specifications and dimensions are approximate. The depicted information is not warranted or guaranteed.