

**VAULTED
CEILING!
UNIQUE
FLOORPLAN!**

HOME FOR SALE

UNIT #302

**LIST PRICE
\$229,900.00**

**NEW LOWER
PRICE!**

SHARE PRICE
\$229,867.00

UPGRADES VALUE
\$26,293.00



FEATURES:

2BR / 2BA + Den
1641 SQ FT

MONTHLY FEE \$2575

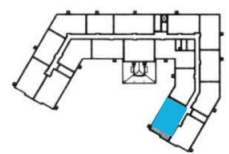
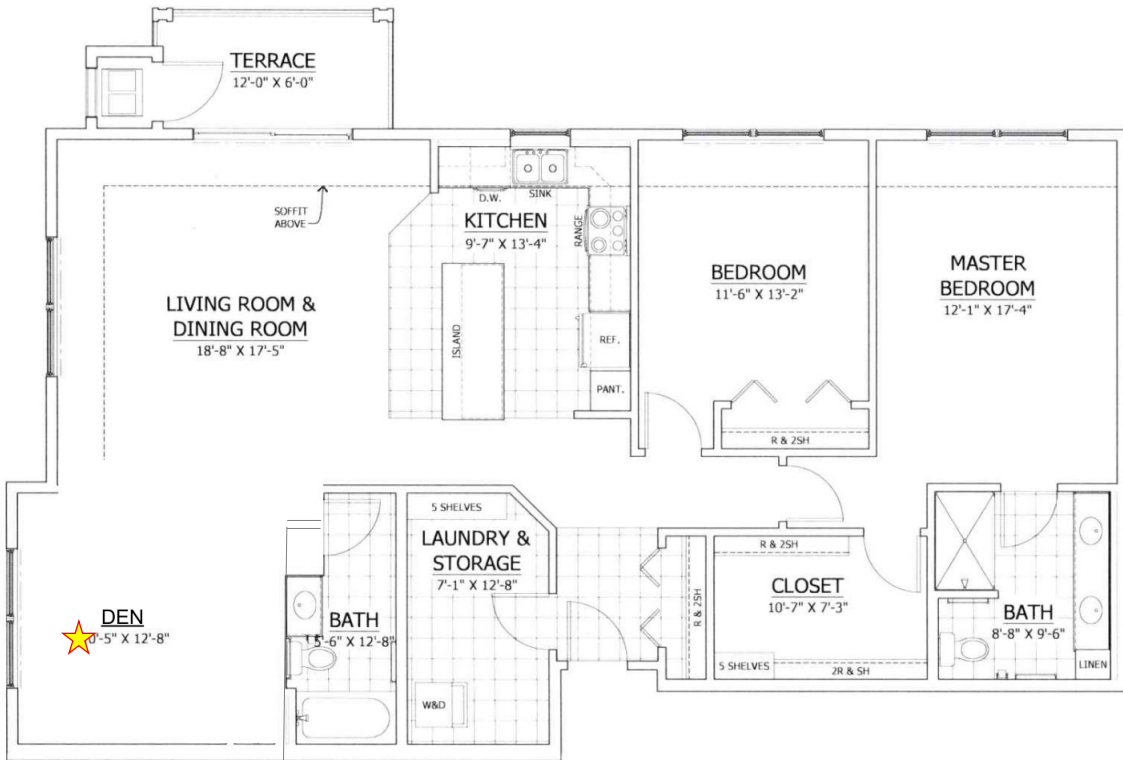
Monthly fee includes:
Share of master mortgage, property taxes, reserves, internal/external maintenance, gas heat, water/sewer, garbage and recycling removal, cable, internet and underground garage parking.

55+ Community | Low-Maintenance Living
901 Windsor Parkway, Johnston, IA
Call Erin Jones today for a personal tour: 515-587-2215



Common Areas/Community:

- Centrally located elevator
- Conveniently located refuse chute for each floor
- Convenient indoor mail for pick-up
- Fire-protection throughout the building with fire alarms, sprinkler system and strobes
- Library and coffee nook
- Secure key-code entry and camera monitoring of common areas
- Vintage lounge with fireplace
- Great Room with serving kitchen, fireplace and outdoor patio
- Two guest suites available for rental
- Fully equipped fitness center, wood-working shop, Club Room with elegant pool table
- Raised garden plots available for individual use



1 Unit per Floor
3 Units Total

CHERRY SUITE 1,641 SF

2 Bedroom, 2 bath

Note: Vaulted ceilings in living/dining area in 3rd floor units

UNIT 302



06.01.26



vintagecooperativejohnston.com